

COLORING FISH



PTERODACTYLUS



The pterodactyl is from the pterosaur family, corresponding to the Pterodactylus gender living in the Jurassic.

The fossils of some of these species are about 70 cm wingspan and pterodactyls lived there about 150 million years. They could have a fibrous crest on its head.



MAMMOTH



Mammoths are extinct mammals of the Elephantidae family, corresponding to the Mammuthus gender and for many species.

They are also close cousins of elephants, not their ancestors. They were a widespread group, well adapted to the cold.

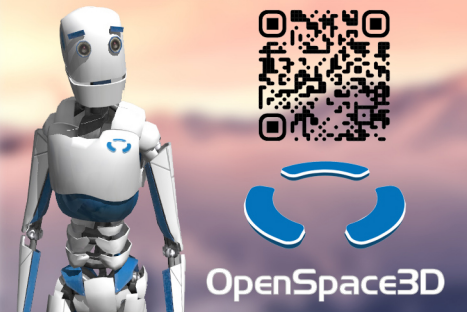


TYRANNOSAURUS



Tyrannosaurus rex is one of the largest land carnivores of all time. It is from the tyrannosauridae family, corresponding to the theropod gender.

Over thirty fossil specimens of Tyrannosaurus rex have been identified, some nearly complete.



A free and open-source platform designed to create virtual and augmented-reality applications or games

Join us freely on
WWW.OPENSACE3D.COM

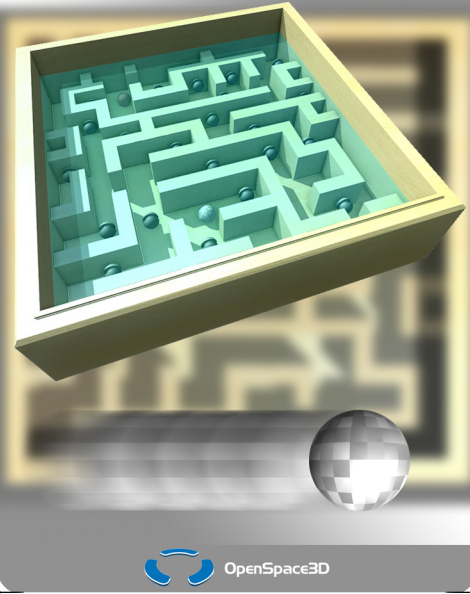
i-maginer



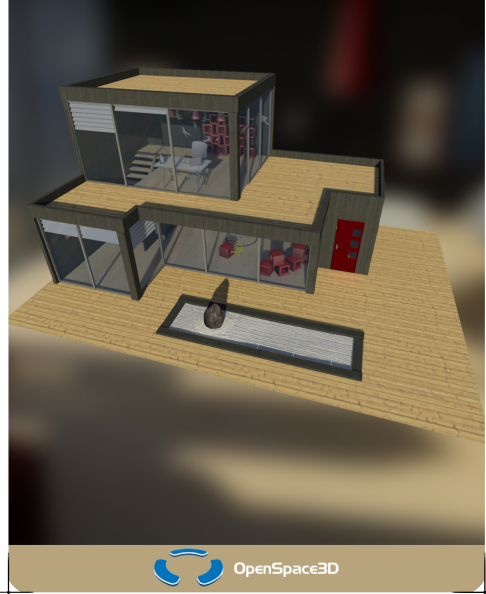
Car showroom



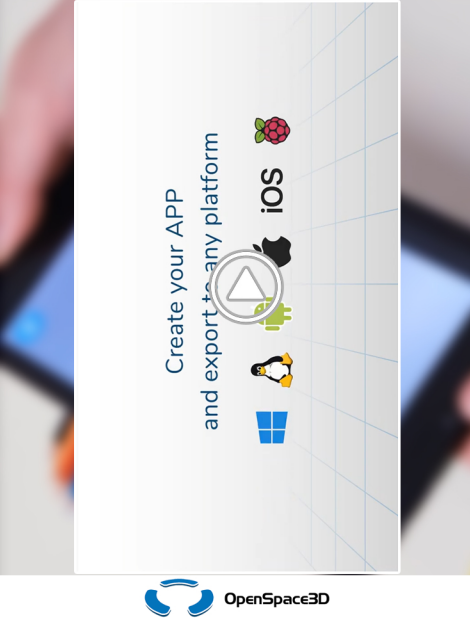
Maze



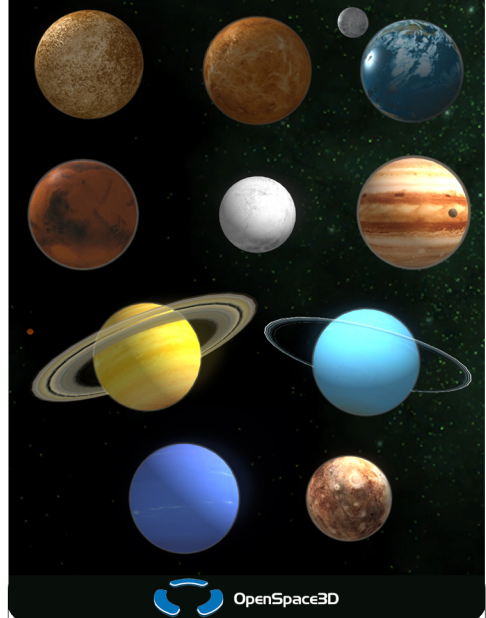
Loft 3D



Video trailer



Solar system



Cow



Tarantula





Soda

