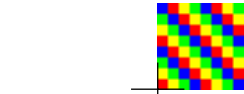
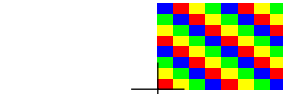


# ImageDemo



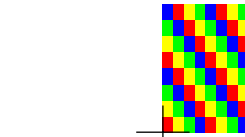
(x=100,y=350)

Actual Size



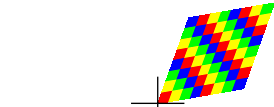
(x=250,y=350)

Scaling image (X direction)



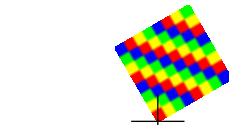
(x=400,y=350)

Scaling image (Y direction)



(x=100,y=230)

Skewing image



(x=250,y=230)

Rotating image



(x=400,y=230)

masked image



(x=100,y=110)

Color Mask